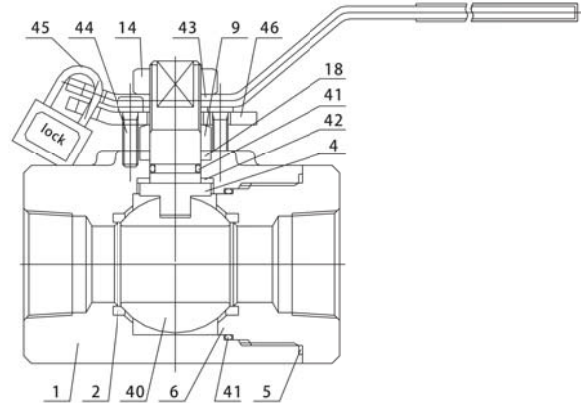


# 2-PCS Body Forged steel ball valves (Smaller than 2")



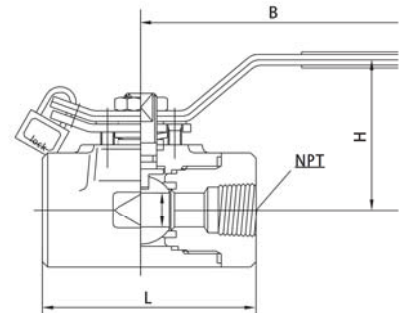
- 1 Design and manufacture conform to BS 5351, MSS SP-118
- 2 Connection ends conform to
  - 1) Socket welded ends conform to ANSIB16.11
  - 2) Screw ends conform to ANSI B1.20.1
  - 3) Butt-welded ends conform to ANSI B16.25
  - 4) Flanged ends conform to ANSI B16.5
- 3 Test and inspection conform to API 598
- 4 Structure features
  - Bolted bonnet 2-PCS Body
- 5 Main materials
  - A105 LF2 304(L) 316(L) F347 F321 F51 Monel 20Alloy.



## Main part materials list

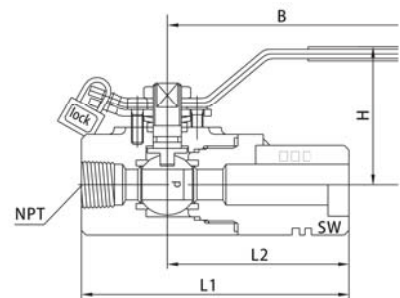
No.	Part name	A105 /F6a	LF2 /304	F304(L) /304(L)	F316(L) /316(L)	F51 /F51
1	Body	A105	LF2	F304(L)	F316(L)	F51
2	Seat	RPTFE & PEEK	RPTFE & PEEK	RPTFE & PEEK	RPTFE & PEEK	RPTFE & PEEK
4	Stem	410	304	F304(L)	F316(L)	F51
5	Gasket	PTFE	PTFE	PTFE	PTFE	PTFE
6	Bonnet	A105	LF2	F304(L)	F316(L)	F51
9	Gland	410	304	F304(L)	F316(L)	F51
14	Flat nut	8	8	8	8M	8M
18	Packing	PTFE	PTFE	PTFE	PTFE	PTFE
40	Ball	F6	F304	F304(L)	F316(L)	F51
41	O-ring	VITON	VITON	VITON	VITON	VITON
42	Back seat gasket	RPTFE & PEEK	RPTFE & PEEK	RPTFE & PEEK	RPTFE & PEEK	RPTFE & PEEK
43	Wrench	ANSI 1025	ANSI 1025	ANSI 1025	ANSI 1025	ANSI 1025
44	Screw	B8	B8	B8	B8M	B8M
45	Lock	Finished product	Finished product	Finished product	Finished product	Finished product
46	Locator	ANSI-1025	ANSI-1025	ANSI-1025	ANSI-1025	ANSI-1025

CL150-285 P.S.I @ 100°F  
 CL300-740 P.S.I @ 100°F  
 CL600-1480 P.S.I @ 100°F  
 CL800-1975 P.S.I @ 100°F  
 CL1500-3705 P.S.I @ 100°F



## CLASS800 Dimension chart Unit(mm)

Specification(NPS)	R.P F.P	1/4	3/8	1/2	3/4	1	1 1/4	1 1/2	2	2 1/2
Face to face	L1	70	70	80	95	115	125	135	155	155
Coupling pipe end to center	L2	121	121	121	130	136	140	148	160	160
Center to handle end	B	160	160	160	160	170	230	230	280	280
Height	H	60	60	60	65	85	105	105	125	125
Height (inside bore)	d	6	9	12.5	17	24	37	37	49	49
Weight(Kg)		1.2	0.9	1.3	2.2	3.5	6.5	6.5	11	11



## CLASS1500-2500 Dimension chart Unit(mm)

Specification(NPS)	F.P		1/4	3/8	1/2	3/4	1	1 1/4	1 1/2	2
Face to face	L1	CL1500	80	80	95	115	125	135	155	155
		CL2500			125	135	155			
Coupling pipe end to center	L2	CL1500	121	121	130	136	140	148	160	175
		CL2500			136	140	148			
Center to handle end	B	CL1500	160	160	160	170	230	230	280	280
		CL2500			230	230	280			
Height	H	CL1500	60	60	65	85	105	105	125	125
Weight(Kg)		CL2500			90	110	125			
Height (inside bore)	d	CL1500	6	9	13	19	25	32	38	49
		CL2500			13	19	25			
Weight(Kg)		CL1500	1.2	1.5	2.5	3.7	5.8	8.7	11.5	13.7
		CL2500			2.7	4.1	6.3		12	

