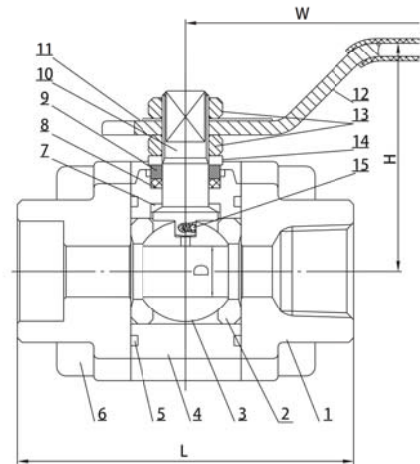


3PCS Forged steel ball valves

- 1 □ Design and manufacture conform to BS-5351 MSS SP-118 □
- 2 □ Connection ends conform to □
 - 1) Socket welded ends conform to ANSI B16.11
 - 2) Screw ends conform to ANSI B1.20.1
 - 3) Butt-welded ends conform to ANSI B-16.25
 - 4) Flanged ends conform to ANSI B16.5
- 3 □ Test and inspection conform to □ API 598 □ GB/T13927 □ JB/T9092
- 4 □ Structure features □ Bolted bonnet □ 3-PCS Body □
- 5 □ Materials conform to ANSI/ASTM.
- 6 □ Main materials □
 - A105 □ LF2 □ F5 □ F11 □ F22 □ 304(L) □ 316(L) □ F347 □
 - F321 □ F51 □ Monel □ 20 Alloy.



CL150-285 P.S.I @ 100°F
 CL300-740 P.S.I @ 100°F
 CL600-1480 P.S.I @ 100°F
 CL800-1975 P.S.I @ 100°F
 CL1500-3705 P.S.I @ 100°F

Main part materials list

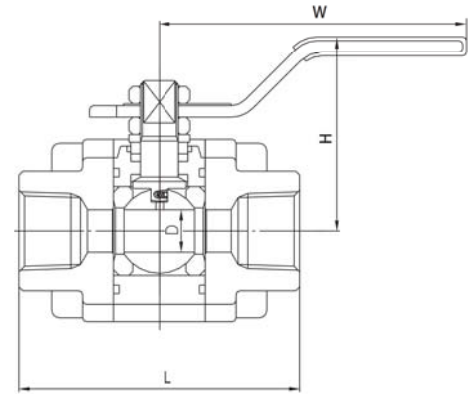
No.	Part name	A105/F6a	LF2/304	F304(L)/304(L)	F316(L)/316(L)	F51/F51
1	Bonnet	A105	LF2	F304	F316	F51
2	Seat	RPTFE & PEEK	RPTFE & PEEK	RPTFE & PEEK	RPTFE & PEEK	RPTFE & PEEK
3	Ball	F6	F304	F304(L)	F316(L)	F51
4	Body	A105	LF2	F304(L)	F316(L)	F51
5	O-ring	VITON	VITON	VITON	VITON	VITON
6	Bolt		B8	B8	B8M	B8M
7	Gasket	PTFE	PTFE	PTFE	PTFE	PTFE
8	Packing	PTFE	PTFE	PTFE	PTFE	PTFE
9	Gland	410	304	304(L)	316(L)	F51
10	Stem	410	304	304(L)	316(L)	F51
11	Nameplate	Al	Al	Al	Al	Al
12	Lever	1045+Zn	1045+Zn	1045+Zn	1045+Zn	1045+Zn
13	Nut	2H	8	8	8M	8M
14	Elastic washer	65Mn	65Mn	304	304	304
15	Anti-static spring	304	304	304	316L	316L



3PCS Forged steel ball valves

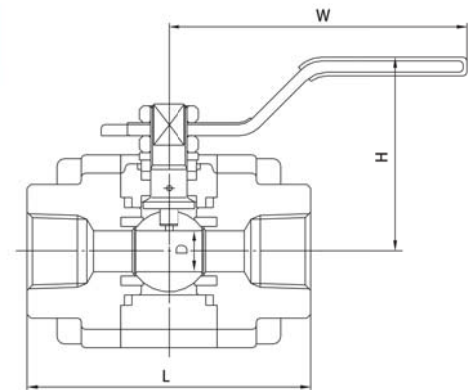


CLASS800-1500 Dimention chart											Unit(mm)
FULL PORT	Mom Size	inch	1/4	3/8	1/2	3/4	1	1 1/4	1 1/2	2	
			mm	mm	mm	mm	mm	mm	mm	mm	
End to End	CLASS 800	L	67	67	73	88	105	116	128	146	
	CLASS 1500	L	73	73	88	105	116	128	146	-	
Lever	CLASS 800	W	120	120	120	145	145	175	175	260	
	CLASS 1500	W	120	120	145	145	175	175	260	-	
Center of Top	CLASS 800	H	50	50	52	60	65	86	93	110	
	CLASS 1500	H	52	52	60	60	86	93	110	-	
Inside Bore	CLASS 800	D	11	11	14	20.5	25	31.6	38	49	
	CLASS 1500	D	11	11	14	20.5	25	31.6	38	-	
Weight	CLASS 800	Kg	0.75	0.75	0.95	1.7	2.4	3.7	4.9	8.7	
	CLASS 1500	Kg		1.2	2.2	3.4	4.7	6.7	10.5	-	



CLASS 800

CLASS800-1500 Dimention chart											Unit(mm)
REG.PORT	Mom Size	inch	1/2	3/4	1	1 1/4	1 1/2	2			
			mm	mm	mm	mm	mm	mm	mm		
End to End	CLASS 800	L	67	73	88	105	116	128			
	CLASS 1500	L	73	88	105	116	128	146			
Lever	CLASS 800	W	120	120	145	145	175	175			
	CLASS 1500	W	120	145	145	175	175	260			
Center of Top	CLASS 800	H	50	52	60	65	86	93			
	CLASS 1500	H	52	60	60	86	93	110			
Inside Bore	CLASS 800	D	11	14	20.5	25	31.6	38			
	CLASS 1500	D	11	14	20.5	25	31.6	38			
Weight	CLASS 800	Kg	0.75	0.95	1.7	2.4	3.7	4.9			
	CLASS 1500	Kg	1.2	2.2	3.4	4.7	6.7	10.5			



CLASS 1500

SOCKET WELD DIMENSIONS										
Mom Size	inch	1/4	3/8	1/2	3/4	1	1 1/2	1 1/4	2	
		mm	mm	mm	mm	mm	mm	mm	mm	
ANSI B16.11	E	14.1	17.6	21.9	27.4	34.2	42.7	48.8	61.1	
	D	9.6	9.6	9.6	12.7	12.7	12.7	12.7	15.9	

